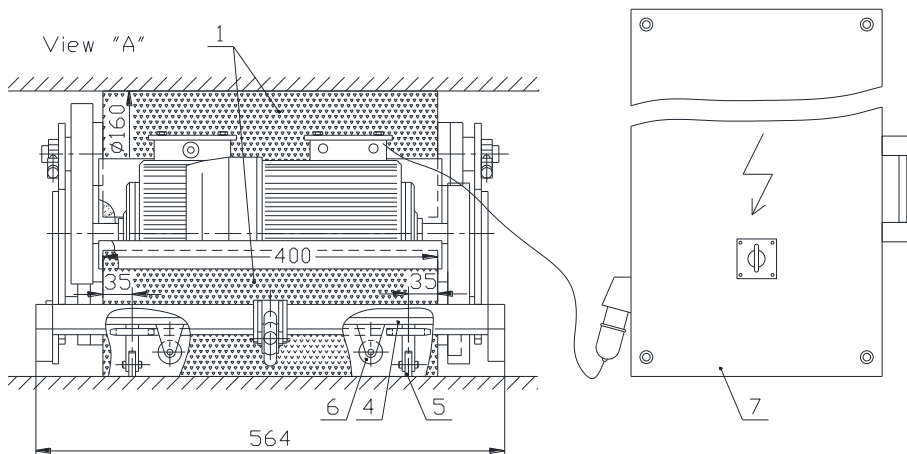
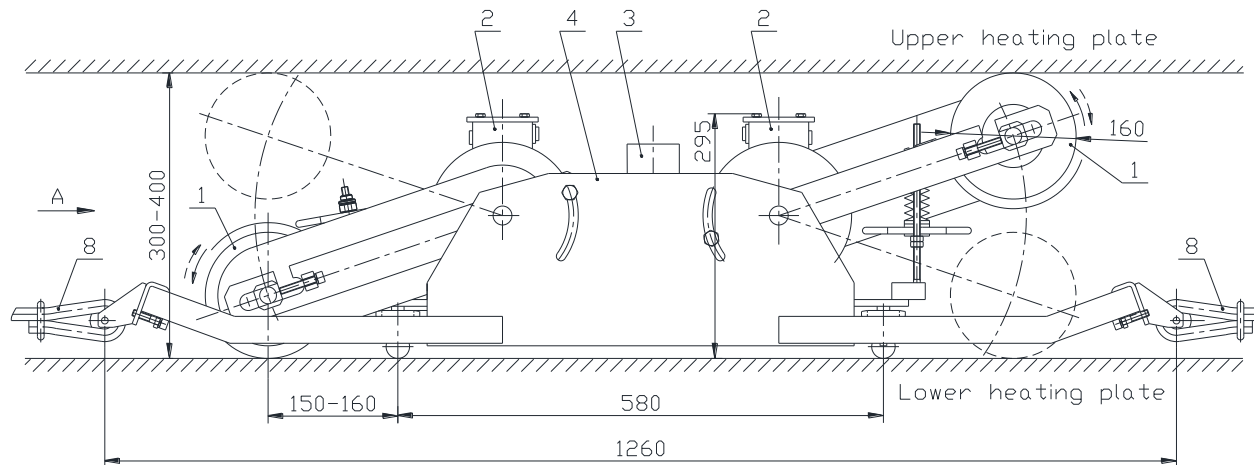




**DEVICE FOR CLEANING AND SANDING OF HEATING PLATES – ČB 240**



**Legend:**

1. Brush / roller
2. Electric engine for brush / roller
3. Electric engine for table lifting
4. Stand
5. Longitudinal wheels
6. Transversal wheels
7. Electrical cabinet
8. Rope

**Main technical data:**

- Purpose: cleaning and sanding of heating plates
- Max. heating plate length .....15,0 m
- Heating plate distance.....(300-400) mm
- Brush .....steel wire
- Roller.....sanding paper
- Brush / roller:
  - length.....400 mm
  - diameter.....160 mm
  - torque.....1460 min<sup>-1</sup>
  - pressing force.....(0-300) N
- Delivery:
  - brush 2 kom.
  - roller 2 kom.
- Operating modes:
  - both brushes (rollers) up or down
  - one brush (roller) up, other down
  - one brush (roller) up or down
- Device movement.....manually
- El. Engine lifting/lowering of stand, for easier longitudinal movement
- El. engine total power .....3,2 kW
- Weight of movable part.....~140 kg

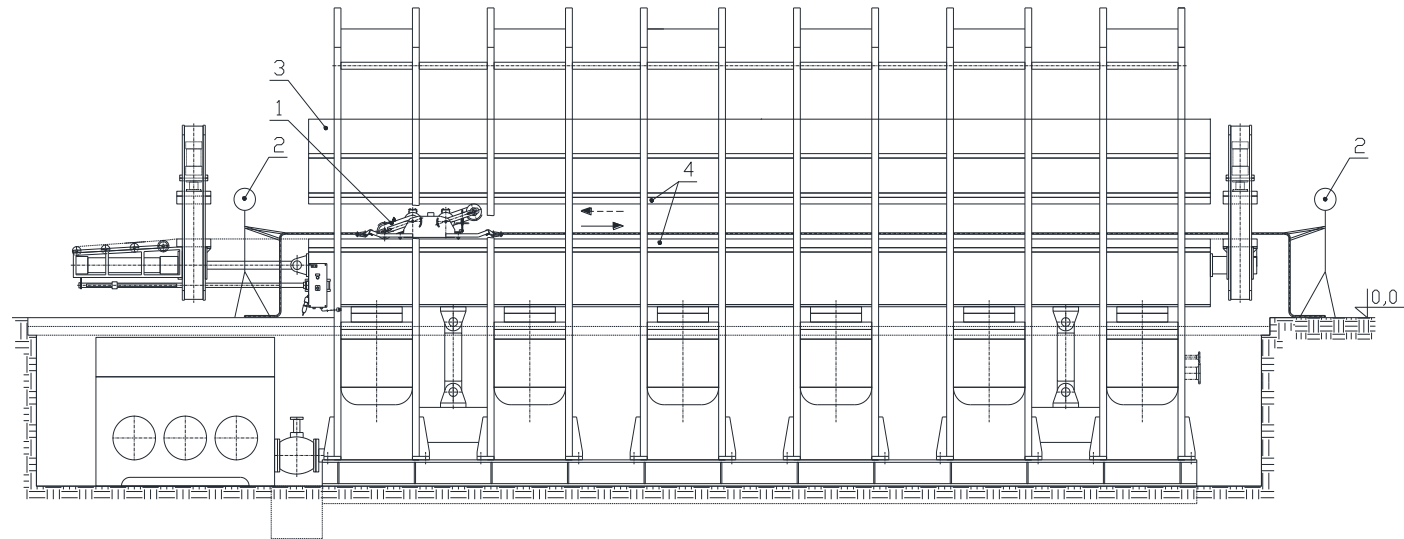
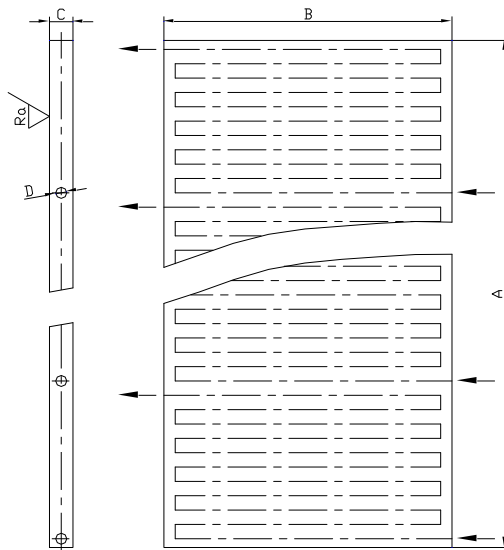




**PROCEDURE OF MOVEMENT FOR CLEANING AND SANDING DEVICE - ČB 240**

WE OFFER, PRODUCTION OF NEW AND REPAIR OF USED HEATING PLATES:

- A - Length ..... $\leq 16000$  mm
- B - Width ..... $\leq 3400$  mm
- C - Thickness .....(30 – 150) mm
- D – Holes diameter .....(20 – 40) mm
- Ra – Surface roughness ..... $\geq 0,8 \mu\text{m}$
- Miscellaneous .....on request



Legend:

- 1. Device ČB 240
- 2. Operator
- 3. Press
- 4. Heating plate

